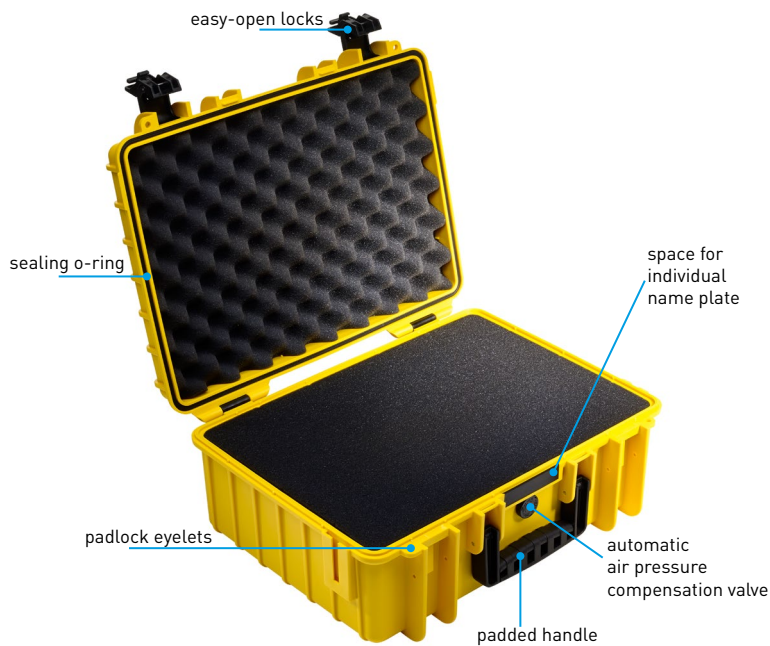


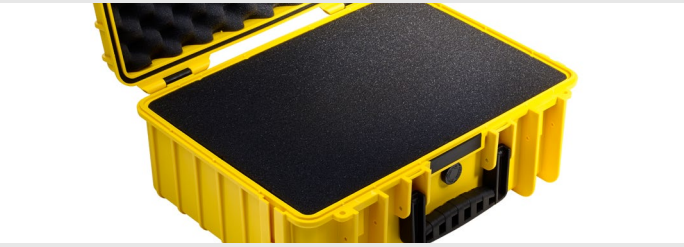
## FEATURES



- impact-resistant cases made of polypropylene (PP)
- very stable and stackable
- dustproof and waterproof
- temperature resistant from -30°C to +80°C
- automatic air pressure compensation valve
- eyelets for padlocks
- shoulder strap, backpack-system or further accessories available
- selectable custom interior (SI,RPD)
- standard colors: black and yellow, grey for some models
- 30 year warranty
- available in different sizes

type	internal dimensions (mm/inch)						external dimensions (mm/inch)						weight (kg)	volume (l)	colours	trolley
				bottom	lid											
200	135 5.3	x	75 3.0	x	20 0.8			150 5.9	x	105 4.1	x	35 1.4			■ ■	
500	205 8.1	x	145 5.7	x	80 3.1	60 2.4	20 0.8	230 9.1	x	180 7.1	x	90 3.5	0,5	2,3	■ ■	
1000	250 9.8	x	175 6.9	x	95 3.7	70 2.8	25 1.0	270 10.6	x	215 8.5	x	105 4.1	0,7	4,1	■ ■ ■	
2000	250 9.8	x	175 6.9	x	155 6.1	130 5.1	25 1.0	270 10.6	x	215 8.5	x	165 6.5	0,9	6,6	■ ■	
3000	330 13.0	x	235 9.3	x	150 5.9	110 4.3	40 1.6	365 14.4	x	295 11.6	x	170 6.7	1,7	11,7	■ ■	
4000	385 15.2	x	265 10.4	x	165 6.5	120 4.7	45 1.8	420 16.5	x	325 12.8	x	180 7.1	2,3	16,6	■ ■	
5000	430 16.9	x	300 11.8	x	170 6.7	125 4.9	45 1.8	470 18.5	x	365 14.4	x	190 7.5	2,9	22,1	■ ■	
5500	430 16.9	x	300 11.8	x	300 11.8	255 10.0	45 1.8	495 19.5	x	365 14.4	x	315 12.4	4,0	37,9	■ ■	
6000	475 18.7	x	350 13.8	x	200 7.9	150 5.9	50 2.0	510 20.1	x	420 16.5	x	215 8.5	3,9	32,6	■ ■ ■	
6500	585 23.0	x	415 16.3	x	210 8.3	160 6.3	50 2.0	660 26.0	x	490 19.3	x	230 9.1	5,7	51,0	■	
6700	535 21.1	x	360 14.2	x	225 8.9	175 6.9	50 2.0	610 24.0	x	430 16.9	x	265 10.4	6,8	42,8	■ ■ ■	✓
6800	585 23.0	x	410 16.1	x	295 11.6	245 9.6	50 2.0	660 26.0	x	490 19.3	x	335 13.2	8,1	70,9	■	✓

## Sponge Insert (SI)



- removable cubed pre-cut foam insert allow for precision customisation, robust egg-crate foam in the lid for full shock resistant protection
- available for all sizes

## Padded Dividers (RPD)



- fully configurable padded partition insert made of washable, heavy duty nylon fabric with hook-and-loop attachments, robust egg-crate foam in the lid
- available for type 1000-6800

## Shoulder Strap (CS)



- sturdy, weather resistant, comfortable shoulder strap
- available for type 500 - 6500

## Backpack-System (BPS)



- sturdy, weather resistant, comfortable backpack-system to make carrying your outdoor.case easy
- available for type 5000-6000

## Lid Pocket (LP)



- lid pocket to hold documents, operation manuals etc.
- detachable with hook-and-loop fastener
- available for type 1000 - 6000

## Mesh Bag (MB)



- lid pocket made from mesh material to hold smaller items and accessories
- simple mounting in the lid
- available for type 1000, 2000, 3000, 4000, 5000, 5500, 6000 and 6700

## Quick Release Hinge (HI)



- the detachable hinge allows the complete removal of the lid
- available for type 3000-6800

## Panel Frame (PF)



- the panel frame mounting system offers an easy solution for the installation of custom panels or any mounting need
- available for type 1000-6000

### B&W International GmbH

Anne Waltermann | Fon +49 54 51 / 89 46-170 | anne.waltermann@b-w-international.com

Marc Paradies | Fon +49 54 51 / 89 46-137 | marc.paradies@b-w-international.com

Fax +49 54 51 / 89 46-444 | [www.b-w-international.com](http://www.b-w-international.com) | [www.facebook.com/BWoutdoor.cases](https://www.facebook.com/BWoutdoor.cases)