

UNIVERSAL.CASES

B&W Universal.cases, a masterpiece crafted with German ingenuity. Built from premium HPDE material, it is not only robust and resilient but also incredibly lightweight. Boasting an IP65 dustproof and waterproof rating and certified by GJB 150A standard, it ensures unparalleled performance in any condition.

B&W Universal.cases- "Professionalism, as it should be - Limitless and Uncompromising."



*Test procedure depends on case size

Tests/Certificates

Mil-Stnd 810H

IP 65 Dustproof Waterproof

ATA 300

art. no.	internal dimensions	external dimensions	volume	weight	telescopic handle	wheel	locking latch	hinge	bottom feet	ergonomic handle	side handle
U29.01	517*326* (100+75) mm / 20.3*12.8* (3.9+2.9) inch	545*400*220 mm / 21.5*15.8*8.7 inch	29L	3.1kg			2	2	4	1	0
U55.01	557*427* (158+75) mm / 21.9*16.8* (6.2+2.9) inch	585*500*285 mm / 23.1*19.7*11.2 inch	55L	4.0kg			2	2	4	1	0
U55.02	557*427* (158+75) mm / 21.9*16.8* (6.2+2.9) inch	600*500*310 mm / 23.7*19.7*12.3 inch	55L	5.2kg	✓	✓	2	2	4+2	1	1
U58.01	570*457* (94+130) mm / 22.4*17.9* (3.7+5.1) inch	620*530*280 mm / 24.4*20.9*11 inch	58L	5.0kg			2	2	4	1	1+1
U74.01	630*430* (200+75) mm / 24.8*16.9* (7.8+2.9) inch	665*505*320 mm / 26.2*19.9*12.6 inch	74L	5.0kg			2	2	4	1	0
U74.02	630*430* (200+75) mm / 24.8*16.9* (7.8+2.9) inch	685*505*340 mm / 27*19.9*13.4 inch	74L	6.3kg	✓	✓	2	2	4+2	1	1
U114.01	770*500* (220+75) mm / 30.3*19.6* (8.6+2.9) inch	805*575*340 mm / 31.7*22.7*13.4 inch	114L	7.3kg			2	3	6	1	1+1
U114.02	770*500* (220+75) mm / 30.3*19.6* (8.6+2.9) inch	820*575*365 mm / 32.3*22.7*14.4 inch	114L	8.2kg	✓	✓	2	3	6+2	1	1+1
U150.01	530*550* (250+265) mm / 20.8*21.6* (9.8+10.4) inch	605*625*570 mm / 23.9*24.6*22.5 inch	150L	7.2kg			6	0	0	0	2+2
U176.01	1170*450* (260+75) mm / 46*17.7* (10.2+2.9) inch	1210*535*390 mm / 47.7*21*15.4 inch	176L	10.3kg		✓	4	4	8+2	1	1+1
U255.01	845*575* (310+215) mm / 33.2*22.6* (12.2+8.4) inch	920*640*575 mm / 36.3*25.2*22.7 inch	255L	9.9kg			5	3	0	0	2+2

U29.01

- **internal dimensions:**
517*326*175 mm / 20.3*12.8*6.8 inch
 - **external dimensions:**
545*400*220 mm / 21.5*15.8*8.7 inch
 - **volume:** 29L
 - **weight:** 3.1kg
- **ITEM-NO.**
U29.01/B/SL
U29.01/B/BL
U29.01/B/TL
U29.01/G/SL
U29.01/G/BL
U29.01/G/TL



U55.01

- **internal dimensions:**
557*427*233 mm / 21.9*16.8*9.1 inch
 - **external dimensions:**
585*500*285 mm / 23.1*19.7*11.2 inch
 - **volume:** 55L
 - **weight:** 4kg
- **ITEM-NO.**
U55.01/B/SL
U55.01/B/BL
U55.01/B/TL
U55.01/G/SL
U55.01/G/BL
U55.01/G/TL



U55.02

- **internal dimensions:**
557*427*233 mm / 21.9*16.8*9.1 inch
 - **external dimensions:**
600*500*310 mm / 23.7*19.7*12.3 inch
 - **volume:** 55L
 - **weight:** 5.2kg
- **ITEM-NO.**
U55.02/B/SL
U55.02/B/BL
U55.02/B/TL
U55.02/G/SL
U55.02/G/BL
U55.02/G/TL



U58.01

- **internal dimensions:**
570*457*224 mm / 22.4*17.9*8.8 inch
 - **external dimensions:**
620*530*280 mm / 24.4*20.9*11 inch
 - **volume:** 58L
 - **weight:** 5kg
- **ITEM-NO.**
U58.01/B/SL
U58.01/B/BL
U58.01/B/TL
U58.01/G/SL
U58.01/G/BL
U58.01/G/TL



U74.01

- **internal dimensions:**
630*430*275 mm / 24.8*16.9*10.8 inch
 - **external dimensions:**
665*505*320 mm / 26.2*19.9*12.6 inch
 - **volume:** 74L
 - **weight:** 5kg
- **ITEM-NO.**
U74.01/B/SL
U74.01/B/BL
U74.01/B/TL
U74.01/G/SL
U74.01/G/BL
U74.01/G/TL



U74.02

- **internal dimensions:**
630*430*275 mm / 24.8*16.9*10.8 inch
 - **external dimensions:**
605*625*570 mm / 23.9*24.6*22.5 inch
 - **volume:** 74L
 - **weight:** 6.3kg
- **ITEM-NO.**
U74.02/B/SL
U74.02/B/BL
U74.02/B/TL
U74.02/G/SL
U74.02/G/BL
U74.02/G/TL



U114.01

- **internal dimensions:**
770*500*295 mm / 30.3*19.6*11.6 inch
 - **external dimensions:**
805*575*340 mm / 31.7*22.7*13.4 inch
 - **volume:** 114L
 - **weight:** 7.3kg
- **ITEM-NO.**
U114.01/B/SL
U114.01/B/BL
U114.01/B/TL
U114.01/G/SL
U114.01/G/BL
U114.01/G/TL



U114.02

- **internal dimensions:**
770*500*295 mm / 30.3*19.6*11.6 inch
 - **external dimensions:**
820*575*365 mm / 32.3*22.7*14.4 inch
 - **volume:** 114L
 - **weight:** 8.2kg
- **ITEM-NO.**
U114.02/B/SL
U114.02/B/BL
U114.02/B/TL
U114.02/G/SL
U114.02/G/BL
U114.02/G/TL



U150.01

- **internal dimensions:**
530*550*515 mm / 20.8*21.6*20.2 inch
 - **external dimensions:**
605*625*570 mm / 23.9*24.6*22.5 inch
 - **volume:** 150L
 - **weight:** 7.2kg
- **ITEM-NO.**
U150.01/B/SL
U150.01/B/BL
U150.01/B/TL
U150.01/G/SL
U150.01/G/BL
U150.01/G/TL



U176.01

- **internal dimensions:**
1170*450*335 mm / 46*17.7*13.1 inch
 - **external dimensions:**
1210*535*390 mm / 47.7*21*15.4 inch
 - **volume:** 176L
 - **weight:** 10.3kg
- **ITEM-NO.**
U176.01/B/SL
U176.01/B/BL
U176.01/B/TL
U176.01/G/SL
U176.01/G/BL
U176.01/G/TL



U255.01

- **internal dimensions:**
845*575*525 mm / 33.2*22.6*20.6 inch
 - **external dimensions:**
920*640*575 mm / 36.3*25.2*22.7 inch
 - **volume:** 255L
 - **weight:** 9.9kg
- **ITEM-NO.**
U255.01/B/SL
U255.01/B/BL
U255.01/B/TL
U255.01/G/SL
U255.01/G/BL
U255.01/G/TL



More models are currently
under development

Coming soon...



Product features



Color selectable



Lock selectable



Customization

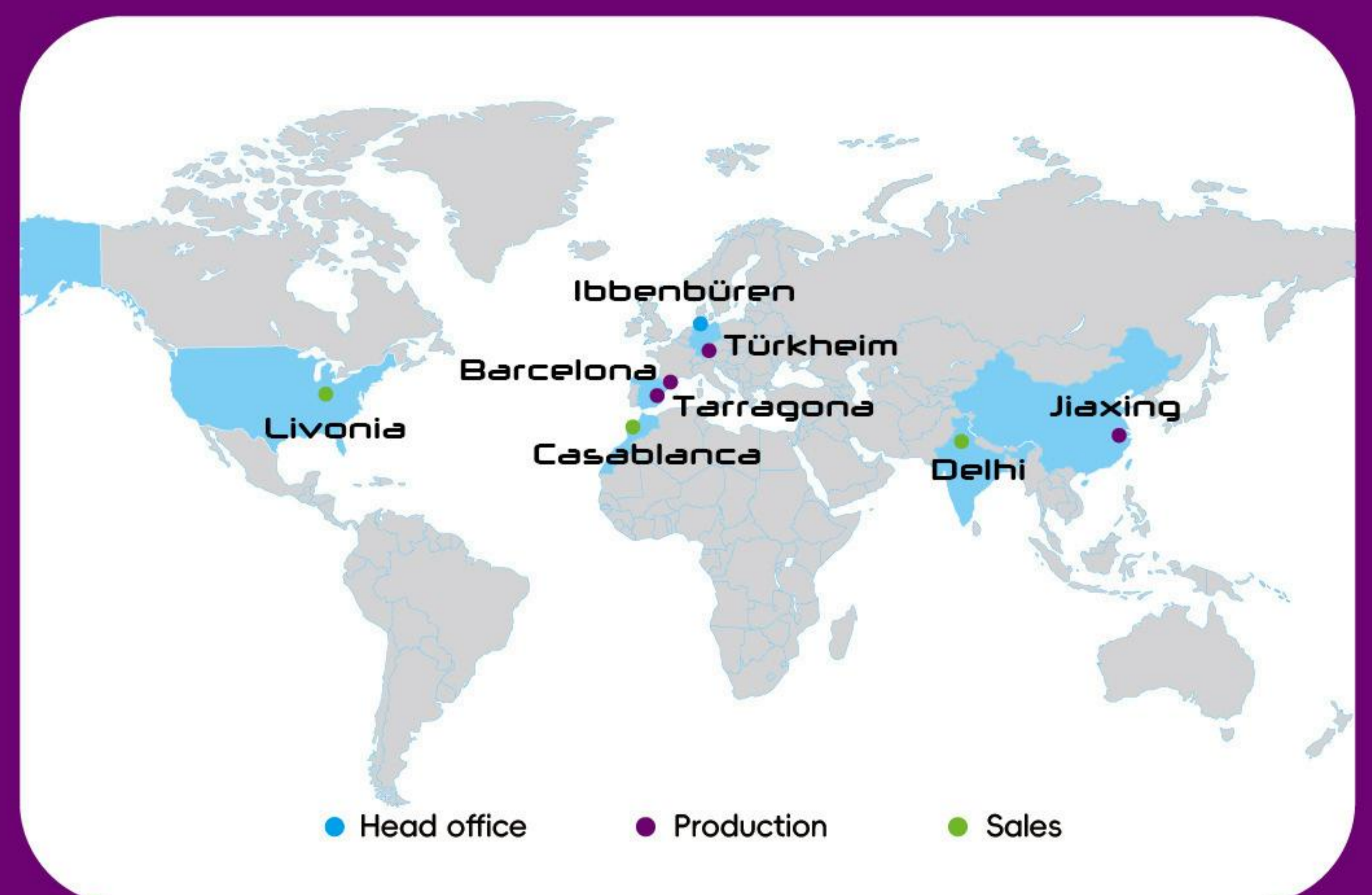
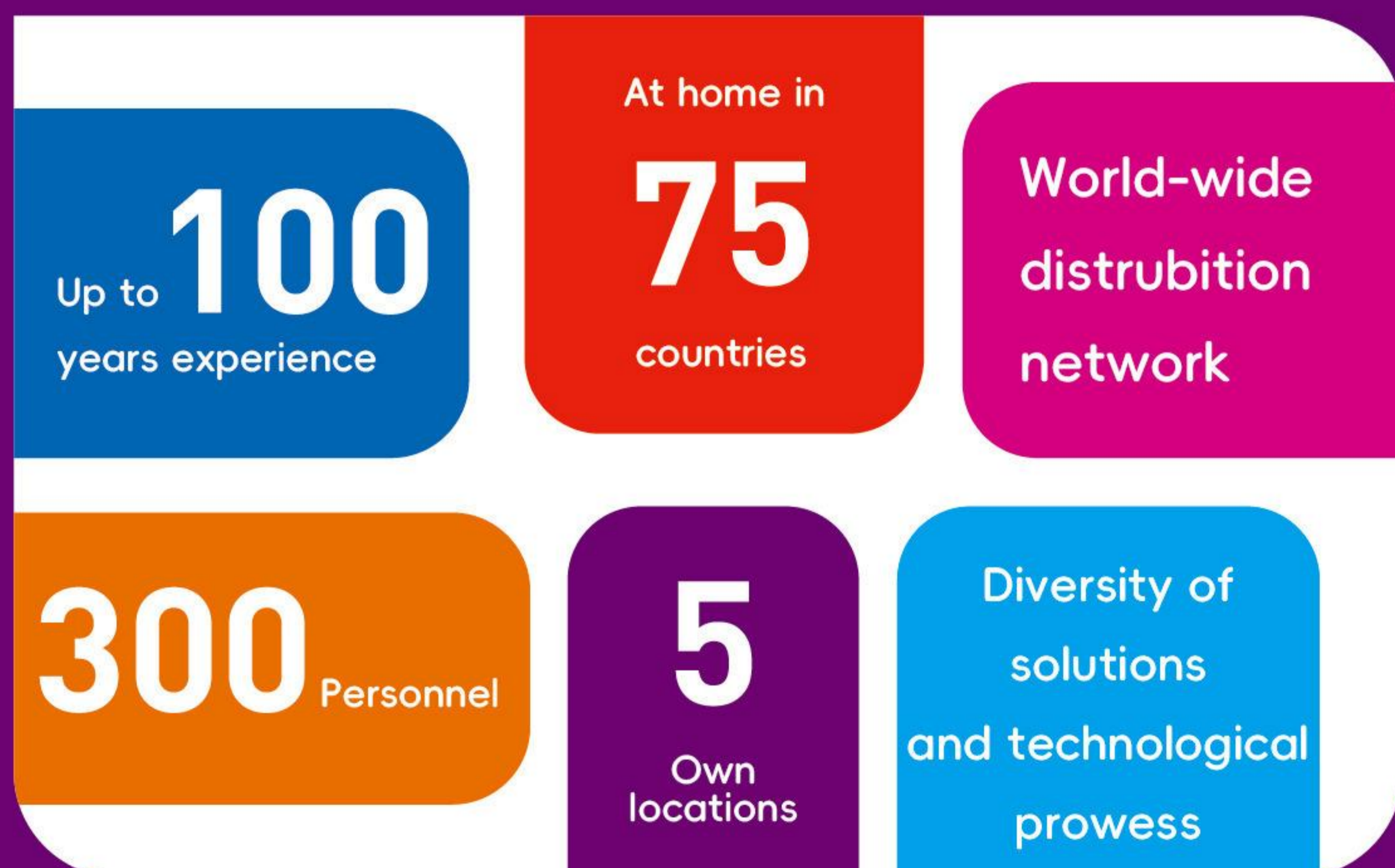


The Environmental Monitoring Engineer Success story

Fan, an environmental monitoring engineer, gathers field data, assesses the quality of the environment, and comprehends emissions of pollutants. His environmental air detector remains intact under the optimal protection of B&W U55.01 case.



B&W Worldwide



B&W(Jiaxing) Co.,Ltd

No.997 Fenghua Road, Jiaxing Economic and Technological Development Zone, Jiaxing 314036, Zhejiang, P.R.China

☎ +86 573 8269 3528

📠 +86 573 8269 3530

✉ info@b-w-international.com.cn

🌐 www.b-w-international.com.cn