

B&W
Cases of Success

outdoor.cases
安全箱



www.b-w-international.com.cn

OUTDOOR.CASES

安全箱：为贵重及精密物品提供全方位防护

我们的户外防护箱以卓越的耐用性，为高价值及易损物品保驾护航。

提供多元尺寸与配色方案，包括以下专业配件：缓冲隔层（防震抗冲击）、定制内衬（精准适配物品轮廓）、人体工学肩带/背负系统（便携移动解决方案）、多隔层顶盖收纳袋（快速取用小型工具）、模块化面板框架（扩展功能组件集成接口）

Our sturdy outdoor cases provide reliable quality for valuable and sensitive objects. Choose from many sizes and colors as well as extensive accessoires, including padded dividers and foam inlays, shoulder straps, backpack systems, pockets in the lid and panel frames.

产品特性 | product features

- 极致防护 无懈可击 | *Maximum Protection*
- 全方位抵御外界侵扰 | *Protection against External Influences*
- 航空适运认证 | *Suitable for Flying*
- 多元尺寸与专属配色 | *Many Sizes and Colors*
- 权威认证品质保障 | *Certified Quality*
- 模块化配件生态定制 | *Individualization with Accessories*

outdoor.cases - 安全箱

概述 <i>overview</i>	04	电池箱 <i>battery.Cases P908</i>	10
配件 <i>accessories</i>	06	多媒体箱 <i>photo & Video</i>	11
星链箱 <i>starlink.Case</i>	08	国际联系方式 <i>international contacts</i>	13
能源箱 <i>energy.Cases</i>	09		

概述

OVERVIEW

B&W倍威安全箱系列：极端环境下的安全存储与运输专家

B&W倍威安全箱系列，为极端环境中的贵重物品提供安全存储与运输的理想解决方案。箱体采用高品质聚丙烯材质打造，具备IP67防尘防水等级，抗冲击加固框架，可定制海绵内衬与RPD间隔，灵活适配不同物品形状与尺寸。配备符合人体工学的手把与锁扣系统，操作便捷性大幅提升。

- 聚丙烯 (PP) 抗冲击箱体
- 高度稳固且可堆叠
- 防尘防水 (IP67认证)
- 通过STANAG 4280、DEF STAN 81-41、MIL-STD810及ATA 300标准认证
- 30年质保
- 适航认证
- 温度稳定性 (-30°C至+80°C)
- 多规格多色可选
- 可提供危险品运输4H2认证

The outdoor cases from B&W International are the ideal solution for the safe storage and transport of your valuable items in extreme conditions. Constructed from high quality polypropylene, they are dustproof, waterproof and impact resistant. The cases are available with a choice of foam inserts and variable dividers to suit your needs. Ergonomic handles and latches make outdoor cases easy to use.

- Impact-resistant Cases made of Polypropylene (PP)
- Very Stable and Stackable
- Dustproof and Waterproof (IP67 certified)
- Certified with the STANAG 4280, DEF STAN 81-41, MIL-STD810 and ATA 300 Standards
- 30 Year Warranty
- Airworthy
- Temperature Stable from -30°C to +80°C
- Available in Different Sizes and Colors
- 4H2 Certification Possible for the Transportation of Hazardous Goods.



尺寸与配置

SIZES AND CONFIGURATIONS

品名 name	型号 previously	内尺寸 (mm) inner dimensions (inch)	底 (mm) bottom (inch)	盖 (mm) lid (inch)	外尺寸 (mm) outer dimensions (inch)	重量 (kg) weight(kg)	容积 (L) volume (L)	颜色 Colors	拉杆 Trolley
bw.case PP.23	500	205 × 145 × 80 8.1 × 5.7 × 3.1	60 2.4	20 0.8	230 × 180 × 90 9.1 × 7.1 × 3.5	0,5	2,3	■ ■ ■ ■ ■	
bw.case PP.41	1000	250 × 175 × 95 9.8 × 6.9 × 3.7	70 2.8	25 1.0	270 × 215 × 105 10.6 × 8.5 × 4.1	0,7	4,1	■ ■ ■ ■ ■	
bw.case PP.66	2000	250 × 175 × 155 9.8 × 6.9 × 6.1	130 5.1	25 1.0	270 × 215 × 165 10.6 × 8.5 × 6.5	0,8	6,6	■ ■ ■ ■ ■	
bw.case PP.117	3000	330 × 235 × 150 13.0 × 9.3 × 5.9	110 4.3	40 1.6	365 × 295 × 170 14.4 × 11.6 × 6.7	1,7	11,7	■ ■ ■ ■ ■	
bw.case PP.166	4000	385 × 265 × 165 15.2 × 10.4 × 6.7	120 4.7	45 1.8	420 × 325 × 180 16.5 × 12.8 × 7.1	2,2	16,6	■ ■ ■ ■ ■	
bw.case PP.221	5000	430 × 300 × 170 16.9 × 11.8 × 6.7	125 4.9	45 1.8	470 × 365 × 190 18.5 × 14.4 × 7.5	2,8	22,1	■ ■ ■ ■ ■	
bw.case PP.162	5040	430 × 300 × 125 16.9 × 11.8 × 4.9	80 3.2	45 1.8	470 × 365 × 140 18.5 × 14.4 × 5.5	2,5	16,2	■ ■ ■ ■ ■	
bw.case PP.379	5500	430 × 300 × 300 16.9 × 11.8 × 11.8	255 10.0	45 1.8	495 × 365 × 315 19.5 × 14.4 × 12.4	3,5	37,9	■ ■ ■ ■ ■	
bw.case PP.326	6000	475 × 350 × 200 18.7 × 13.8 × 7.9	150 5.9	50 1.9	510 × 420 × 215 20.1 × 16.5 × 8.5	3,9	32,6	■ ■ ■ ■ ■	
bw.case PP.210	6040	475 × 350 × 130 18.7 × 13.8 × 5.1	80 3.2	50 2.0	510 × 420 × 150 20.1 × 16.5 × 6.0	3,3	21,0	■ ■ ■ ■ ■	
bw.case PP.510	6500	585 × 415 × 210 23.0 × 16.3 × 8.3	160 6.3	50 2.0	660 × 490 × 230 26.0 × 19.3 × 9.1	6,4	51,0	■ ■ ■ ■ ■	
bw.case PP.260	6600	500 × 285 × 185 23.0 × 16.3 × 8.3	145 5.7	40 1.6	550 × 350 × 225 21.7 × 13.8 × 8.9	5,3	26,0	■ ■ ■ ■ ■	✓
bw.case PP.428	6700	535 × 360 × 225 21.1 × 14.2 × 8.9	175 6.9	50 2.0	610 × 430 × 265 24.0 × 16.9 × 10.4	6,8	42,8	■ ■ ■ ■ ■	✓
bw.case PP.709	6800	585 × 415 × 295 23.0 × 16.1 × 11.6	245 9.6	50 2.0	660 × 490 × 335 26.0 × 19.3 × 13.2	8,6	70,9	■ ■ ■ ■ ■	✓
bw.case PP.860	7200	1080 × 430 × 190 42.5 × 16.9 × 7.5	140 5.5	50 2.0	1150 × 500 × 210 45.3 × 19.7 × 8.3	9,1	86,0	■ ■ ■ ■ ■	✓
bw.case PP.1450	7300	1080 × 430 × 310 42.5 × 16.9 × 12.2	260 10.2	50 2.0	1150 × 500 × 330 45.3 × 19.7 × 13.0	10,7	145,0	■ ■ ■ ■ ■	✓
bw.case PP.1570	7800	770 × 540 × 380 30.3 × 21.3 × 15.0	310 12.2	70 2.8	845 × 615 × 415 33.3 × 24.2 × 16.3	13,0	157,0	■ ■ ■ ■ ■	✓

配件 | ACCESSORIES

面板框架 (PF) PANEL FRAME (PF)

面板框架安装系统为控制开关板或任何安装需求提供简便解决方案，适用于type 1000至6000，其中铝制版本适用于type 4000、6000、6040、6500、6700、6800型。

面板框架 (PFAF) PANEL FRAME (PFAF)

The panel frame mounting system offers an easy solution for the installation of control switchboards or any mounting need, available for type 1000 – 6000, alu available for type 4000, 6000, 6040, 6500, 6700, 6800.



背负系统 (BPS) BACKPACK SYSTEM (BPS)

坚固耐用、防风防雨、舒适安全的背负系统，便于携带您的安全箱，适用于type 3000至6600。

Sturdy, weather resistant, comfortable and secure backpack system to make carrying your outdoor case easy, available for type 3000 – 6600.



箱盖储物袋 (LP) LID POCKET (LP)

用于存放文件的箱盖储物袋，通过螺丝固定，适用于type 1000至7800。

Cover pocket for storing documents, secured with screws. Available for types 1000 – 7800.



网眼储物袋 (MB) MESH BAG (MB)

用于存放小零件的箱盖网眼储物袋，便于安装在箱盖。适用于type 500至7800（注：type 500为粘合固定，其他型号均为螺丝固定）。

Lid pocket for storing small parts, easy to attach to the lid of the case. Available for types 500–7800 (note: type 500 is glued on, all others are screwed on).



配件 | ACCESSORIES

肩带 (CS) SHOULDER STRAP (CS)

坚固耐用、防风防雨、舒适型肩带，适用于type 500、1000、2000、3000、4000、5000、5040、6000、6040、6500。

Sturdy, weather resistant, comfortable shoulder strap, available for type 500, 1000, 2000, 3000, 4000, 5000, 5040, 6000, 6040, 6500.



快拆铰链 (HI) QUICK RELEASE HINGE (HI)

可拆卸铰链便于箱盖的拆卸，适用于type 3000至6800。

The detachable hinge allows the removal of the lid, available for type 3000 – 6800.



RPD间隔 RPD-PADDED DIVIDERS

完全可配置的缓冲隔层内衬，采用可水洗的耐用织物制成，配有钩环固定件，箱盖配备波浪海绵。适用于type 1000至6800，但不含type 5040和6040。

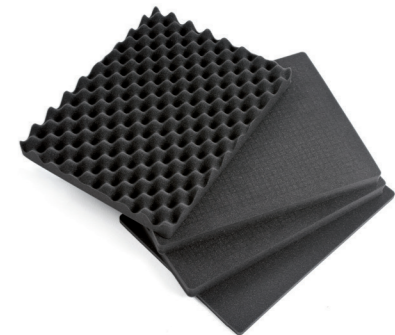
Fully configurable padded partition insert made of washable, heavy duty fabric with hook-and-loop attachments, robust egg-crate foam in the lid. Available for type 1000 - 6800, except for type 5040 and 6040.



SI海绵 SI-SPONGE INSERT

箱体底部配备可拆卸的网格海绵，箱盖配备波浪海绵。适用于所有型号。

Foam insert for the base of the case and a egg-crate foam for the case lid. Available for all types.



星链箱

STARLINK.CASE



星链卫星互联网一站式解决方案

将高速互联网与可靠供电集成于单一箱体中，危机情境下可自主运行的连接系统，下载速率高达250 Mbit/s。这不是未来愿景，而是创新的箱体解决方案——B&W星链箱体与星链运输箱体。

THE COMPLETE SOLUTION OF STARLINK INTERNET
High-speed internet and a reliable power supply in a single case. A self-sufficient connection in crisis situations, with downloads of up to 250 Mbit/s. This is not a vision of the future, but the innovative case solution: the B&W Starlink case and Starlink transport case.



能源箱

ENERGY.CASES

B&W倍威能源箱
专业级移动电力解决方案，可靠随行

B&W倍威能源箱专为专业市场设计，提供可靠且灵活的移动电力解决方案。其开发标准严苛，可耐受极端温度并具备防水性能，重新定义移动供电体验——静音运行、免维护设计、环保节能，满足现代工业场景的多样化需求。

The B&W energy.case is a reliable, mobile power supply for the professional market.

The B&W energy.case offers a reliable and flexible power supply for the professional market. They are developed to meet the toughest requirements. They are temperature-resistant and waterproof. This is how mobile power supply works today. Quiet, maintenance-free and environmentally friendly.

	energy.case PRO500 AC	energy.case PRO1500 AC	energy.case PRO500 DC	energy.case PRO1500 DC
电池容量 <i>Battery Capacity</i>	500 Wh	1500 Wh	500 Wh	1500 Wh
接口 <i>Connectors</i>	1 x 230V 插座, 1 x USB A, 1 x 充电输入接口 1 x 230V Socket, 1 x USB A, 1 x Charging Input	1 x 230V 插座, 2 x USB A, 2 x 充电输入接口 1 x 230V Socket, 2 x USB A, 2 x Charging Input	3x B&W DC 插座, 1 x USB A, 1 x 充电输入接口 3x B&W DC Socket, 1 x USB A, 1 x Charging Input	1x B&W DC 插座, 2 x USB A, 2 x 充电输入接口 1x B&W DC Socket, 2 x USB A, 2 x Charging Input
输出功率 <i>Continuous Power</i>	300 W	300, 1000 W	300 W	24V 最高 500 W 其他配置可定制 24V up to 500W Further Configurations Upon Request
充电功率 <i>Charging Power</i>	200 W	200 W	200 W	200 W
充电选项 <i>Charging Options</i>	230伏充电器，可选： 12V车载、24V卡车、太阳能 230V Charger, Optional: 12V Car, 24V Truck, Solar	230伏充电器，可选： 12V车载、24V卡车、太阳能 230V Charger, Optional: 12V Car, 24V Truck, Solar	230伏充电器，可选： 12V车载、24V卡车、太阳能 230V Charger, Optional: 12V Car, 24V Truck, Solar	230伏充电器，可选： 12V车载、24V卡车、太阳能 230V Charger, Optional: 12V Car, 24V Truck, Solar
工作温度范围 <i>Operating Temperature</i>	-20°C bis +40°C	-20°C bis +40°C	-20°C bis +40°C	-20°C bis +40°C
更多信息 <i>Further Information</i>	外接键盘 IP54防尘防水 External Keypad, IP54	可选配外接或内置键盘 IP65防尘防水 Available with External or Internal Keypad, IP65	内置键盘 IP65防尘防水 Internal Keypad, IP65	可选配外接或内置键盘 IP65防尘防水 Available with External or Internal Keypad, IP65
尺寸 (mm) <i>Dimensions (mm)</i>	470 x 365 x 190 mm	660 x 490 x 335 mm	420 x 325 x 180 mm	660 x 490 x 335 mm
重量 (kg) <i>Weight (kg)</i>	10,9 kg	29,9 kg	8,7 kg	28,4 kg



电池箱

BATTERY CASES P908

安全存储与运输锂电池的理想之选

B&W倍威 P908 电池箱，专为完好及受损锂电池的安全存储与运输设计。得益于金属材质打造的内舱防护层，箱体坚固耐用且操作便捷，并通过官方认证，符合 P903 与 P908 运输法规对完好/受损锂电池存储及运输的合规要求。

Storing and transporting lithium batteries safely

B&W battery cases P908 are the ideal solution for the safe storage and transport of intact and defective lithium batteries. Robust and user-friendly in use thanks to the inner protective space made of metal. They are officially approved for the transport and storage of intact and defective lithium batteries according to the transport regulations P903 and P908.

- 独创安全系统——遇火自动封闭，已获德国专利商标局注册认证
- 高规格防护箱体，内置一体式金属内胆
- 活性炭过滤器可有效抑制电池起火时的有害气体逸出与烟尘生成

- *Unique safety system that closes automatically in the event of a fire inside – registered with the German Patent and Trademark Office*
- *High-quality case with internal metal container*
- *The active carbon filter reduces escaping gases and soot formation in the event of a possible battery fire*

	P908.08	P908.8	P908.16
载重量 Max. Load	0,8 kg	8 kg	16 kg
装载仓尺寸 Load Compartment	208 x 141 x 66 mm	388 x 264 x 140 mm	500 x 314 x 243 mm
重量 Weight	2,1 kg	10,5 kg	18,2 kg
箱内充电功能 Charging Possibility in the Case	✓	✓	-



P908.08



P908.8



P908.16

多媒体箱

PHOTO & VIDEO

运动相机、单反相机、笔记本电脑、云台等设备的最佳拍档：B&W倍威多媒体箱系列，为贵重器材与配件提供完美存储方案。无论是极端天气还是偏远拍摄地，您都能放心将设备托付于此，专注捕捉完美画面。

- 更强防护，更稳守护
- 军工级抗冲击结构
- 防水/防尘/防震三防设计
- 航空适用设计
- 国际认证品质保障
- 多尺寸多配色可选
- 可调整RPD间隔，安全收纳相机与镜头组

Action cams, cameras, laptops, gimbals and much more: the B&W cases for the multimedia sector are perfect for storing valuable equipment and accessories. No matter whether extreme weather or remote filming locations – you can depend on your equipment being kept secure so that you can concentrate on the perfect shot.

- *More Protection and Stability*
- *Extremely Robust*
- *Protection against External Influences*
- *Suitable for Flying*
- *Certified Quality*
- *Many Sizes and Colors*
- *RPD Dividers to Safely Store Camera and Lenses*



多媒体箱 PHOTO & VIDEO



笔记本电脑箱 LAPTOP-SET



媒体箱 MEDIA-SET



无人机箱 DRONE



智能云台箱 GIMBAL



运动相机箱 ACTIONCAM



国际联系方式

INTERNATIONAL CONTACTS

若您对我们的产品、适配配件存在任何疑问，需获取更详尽技术资料，或希望获得非约束性专业建议，欢迎随时联系我们的国际客户支持团队。

If you have any questions about our products or suitable accessories, need further and more detailed information or would like some advice without obligation, please get in touch with our international contacts.



Europe
Headquarter

info@
b-w-international.com

+49 5451 89 46 0



North America

Chris Temple
Sales Director

chris.temple@
b-w-international.com

+1 248 878 4388



India
Rajeev Kaushik
Country Director

rajeev.kaushik@
b-w-international.com

+91 989 111 4005



Africa & Middle East

Pascal Loyacono
Sales Director

Pascal.Loyacono@
b-w-international.com

+212 655 922 692



Asia

Linda Wang
International Sales Manager

linda.wang@
b-w-international.com.cn

+86 573 8269 3528

倍威实业（嘉兴）有限公司

B&W(Jiaxing) Co.,Ltd

浙江省嘉兴市经济技术开发区丰华路997号

No.997 Fenghua Road, Jiaxing Economic and Technological Development Zone,
Jiaxing 314036, Zhejiang, P.R.China



微信公众号

WeChat official account

☎ 国内业务 (Domestic Business): +86 573 8269 3229

☎ 国际业务 (International Business): +86 573 8269 3528

www.b-w-international.com.CN

